



MASSON MARINE SAS

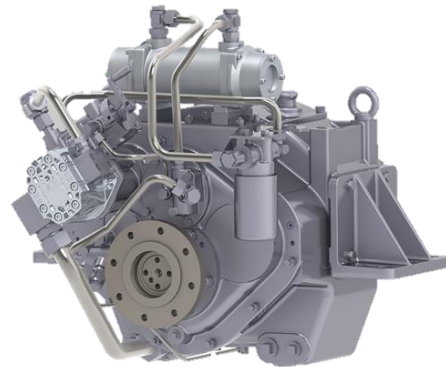
5, rue Henri Cavallier

89100 St Denis Les Sens – France

+33 3 86 95 62 00

www.masson-marine.com

MM W1900



*Maximum rated input: 530kW (710bhp)
Available for Continuous Duty applications*

Description

- Robust design also withstands continuous duty in workboat applications.
- Fully works tested, reliable and simple to install.
- Design, manufacture and quality control standards comply with ISO 9001.
- Reverse/non-reverse reduction marine transmission with hydraulically actuated multi-disc clutches.
- Easy onboard maintenance.
- Compatible with all types of engines and propulsion systems. (Compatible for FPP)

Features

- Case hardened and precisely ground gear teeth for long life and smooth running.
- Output shaft thrust bearing designed to take maximum propeller thrust astern and ahead.
- Smooth and reliable hydraulic shifting with control lever for attachment of push-pull cable or other operating system.
- Suitable for twin engine installations (same ratio and torque capacity in ahead or astern mode)
- Emergency “get home” capability.
- Robust cast iron casing.
- Free standing.
- Oil cooler complete with fittings and flexible hoses.
- Integrated brackets.

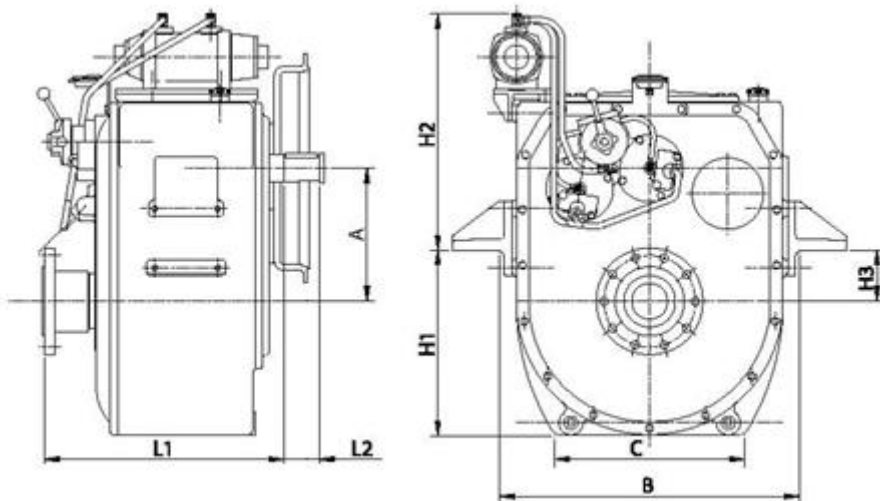
Options

- Engine-matched torsional coupling.
- Propeller shaft flange and coupling bolt sets.
- Classification by all major Classification Societies on request.
- Trolling valve for slow-speed drive.
- Shaft brake.
- Electric clutch control (24 VDC).

Ratings

Ratios	kW/rpm	Sample Power Capacities (kW)			Max rpm
		1800 rpm	2100 rpm	2300 rpm	
1.057	0.189	340	397	435	2800
1.483	0.189	340	397	435	2800
2.000	0.189	340	397	435	2800
2.429	0.189	340	397	435	2800
3.000	0.155	279	326	357	2800

Dimensions



mm							
A	B	C	H1	H2	H3	L1	L2
165	630	430	200	570	-20	580	90
Weight kg							
410							