



MASSON MARINE SAS

5, rue Henri Cavallier
89100 St Denis Les Sens – France
+33 3 86 95 62 00
www.masson-marine.com

MM W4400



Vertical offset

*Direct or remote mount marine transmission
Maximum rated input: 1 132kW (1 517bhp)
Available for Continuous Duty applications*

Description

- Robust design also withstands continuous duty in workboat applications.
- Fully works tested, reliable and simple to install.
- Design, manufacture and quality control standards comply with ISO 9001.
- Reverse reduction marine transmission with hydraulically actuated multi-disc clutches.
- Easy onboard maintenance.
- Compatible with all types of engines and propulsion systems (Both CPP and FPP).

Features

- Case hardened and precisely ground gear teeth for long life and smooth running.
- Output shaft thrust bearing designed to take maximum propeller thrust astern and ahead.
- Smooth and reliable hydraulic shifting with control lever for attachment of push-pull cable or other operating system.
- Suitable for twin engine installations (same ratio and torque capacity in ahead or astern mode)
- Emergency “get home” capability.
- Robust cast iron casing.
- Free standing.
- Oil cooler complete with fittings and flexible hoses.
- Separated brackets.

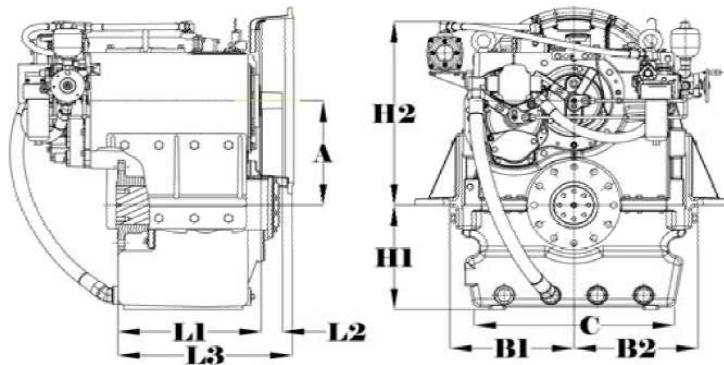
Options

- Engine-matched torsional coupling.
- Propeller shaft flange and coupling bolt sets.
- Classification by all major Classification Societies on request.
- PTO (live or clutchable).
- Trolling valve for slow-speed drive.
- Standby oil pump.
- Electric clutch control (24VDC)
- Adapter flange for SAE 0 and SAE 1 connections

Ratings

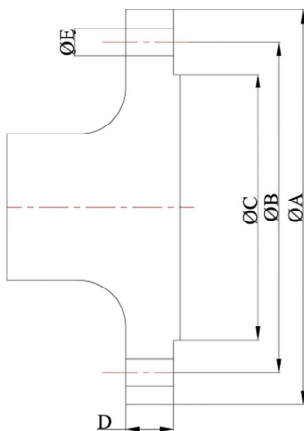
Ratios	kW/rpm	Sample Power Capacities			Max rpm
		1200 rpm	1600 rpm	1800 rpm	
3.486	0.540	648	864	972	2100
4.032	0.540	648	864	972	2100
4.448	0.540	648	864	972	2100
5.077	0.540	648	864	972	2100
5.542	0.540	648	864	972	2100
5.913	0.540	648	864	972	2100

Dimensions



mm (inches)								
A	B ₁	B ₂	C	H ₁	H ₂	L ₁	L ₂	L ₃
400	454	454	800	400	705	524	77	637
Weight kg						Oil Capacity Litres		
1270						85		

Output Coupling Dimensions



A	B	C	D	Bolt Holes	
				No.	Diameter (E) mm
mm	mm	mm	mm	12	24.5
343	292	178	25.4	12	24.5