

Model		W 8450			
Power/RPM	Kw/RPM (Hp/RPM)	0.764 (1.025)	0.680 (0.912)	0.620 (0.831)	0.602 (0.807)
Maximum rated input	Kw (Hp)	1604 (2152)	1428 (1915)	1302 (1746)	1264 (1695)
Ratio		8.128	8.707, 9.129	9.552, 10.015, 10.706, 11.067, 11.745	12.096
Maximum Input RPM		2100			
Dry Weight	kg(lb)	3800(8378)			
SAE bell		(-) None			
Offset type		Vertical			
Kinematics		Non Reversible, Engine Wise and Counter Engine Wise			

## Description

- Robust design and easy onboard maintenance.
- Robust design also withstands continuous duty in workboat applications.
- Fully works tested, reliable and simple to install.
- Reverse reduction marine transmission with hydraulically actuated multi-disc clutches.
- Case hardened and precisely ground gear teeth for long life and smooth running.
- Robust cast iron casing for direct or remote mounting.
- Emergency "get home" capability.
- Integrated Roller Thrust bearing.
- Design, manufacture and quality control standards comply with ISO.
- Suitable for twin installation with 100% rated power in ahead and astern condition.

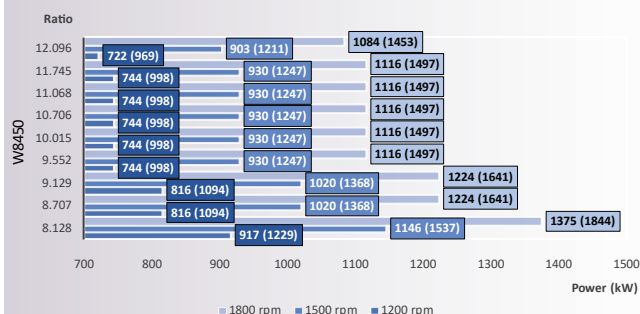
## Standard Equipment

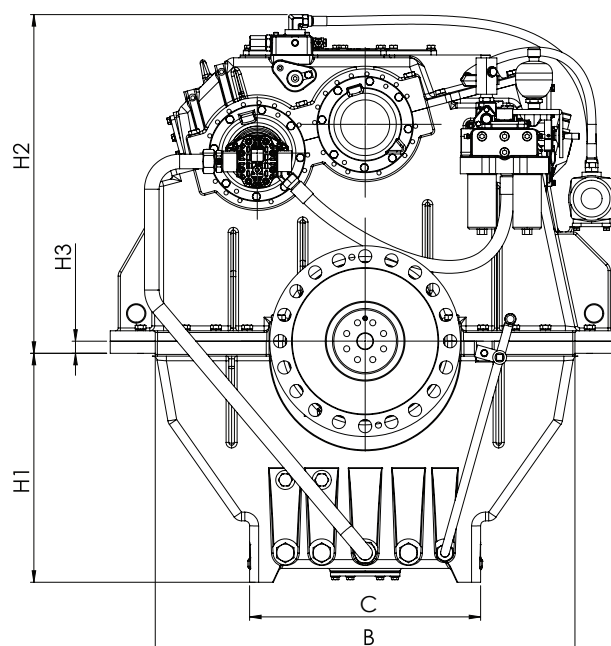
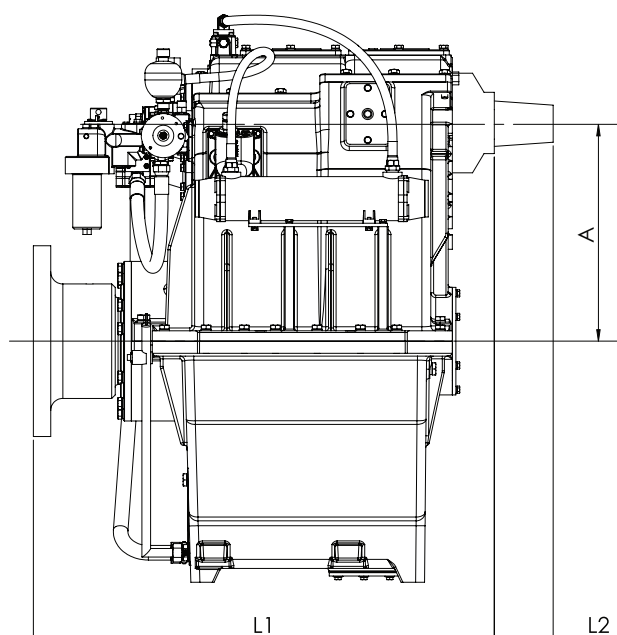
- Oil cooler complete with fittings and flexible hoses.
- Integrated Brackets.
- Free Standing only.
- Single oil filter.
- Manual clutch control.

## Option

- Engine-matched torsional coupling.
- Propeller shaft flange and coupling bolt set.
- Classification by all major Classification Societies on request.
- PTO (live or clutchable).
- Electric trolling valve for slow-speed drive.
- Shaft brake.
- Electric clutch control.
- Trailing Pump.

Sample Powers (kw/hp)

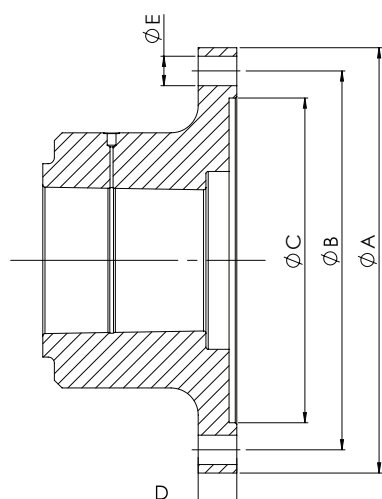




Model	A	B	C	H1	H2	H3	L1	L2	Weight kg (lb)
W8450	625	1210	666	660	826	35	1700	165	3800(7500)

\* Preliminary dimension without RCA Box, located in front of the Gearbox

**All dimensions in mm.**



### Output Coupling dimension

A		B		C		D		Bolt Holes		
								No.	Diameter (E)	
mm	inch	mm	inch	mm	inch	mm	inch		mm	in
550	21.7	490	19.3	420	16.5	50	2	20	38	1.50

*Masson Marine products are available all over the world through our Network dealers*



**f** [www.masson-marine.com](http://www.masson-marine.com) **in**

[contact@masson-marine.com](mailto:contact@masson-marine.com)  
5 rue Henri Cavallier  
89100 Saint Denis les Sens - France

