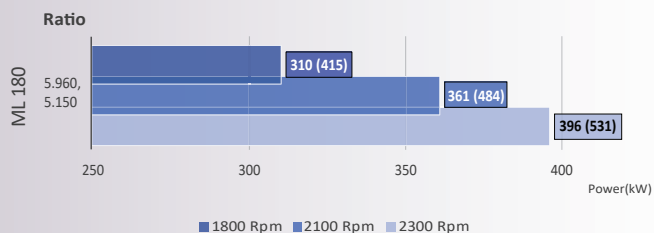


Model		ML 180
Power/RPM	kW/RPM (hp/RPM)	0,172 (0,231)
Maximum rated input	kW (hp)	430 (578)
Ratio		5,15 ; 5,96
Maximum input RPM		2500
Dry weight	kg (lb)	475 (1047)
SAE bell		#1, #2
Offset type		Vertical offset
Kinematics		Counter Engine Wise

Description

- Robust design and easy onboard maintenance.
- Withstands various applications: pleasure, light, medium and continuous duty.
- Fully works tested, reliable and simple to install.
- Reverse reduction marine transmission with hydraulically actuated multi-disc clutches.
- Case hardened and precisely ground gear teeth for long life and smooth running.
- Robust cast iron casing for direct or remote mounting.
- Emergency "get home" capability.
- Design, manufacture and quality control standards comply with ISO.
- Suitable for twin installation with 100% rated power in ahead and astern condition.

Sample Powers kW (hp)

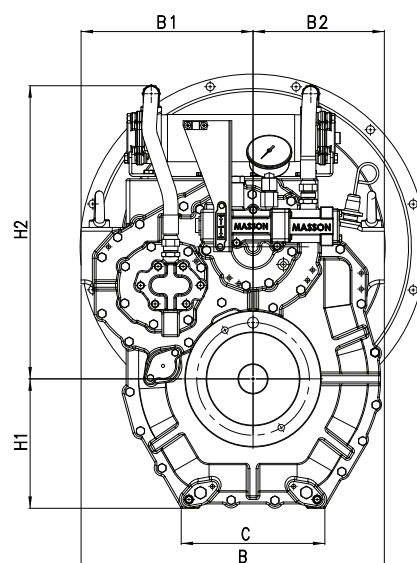
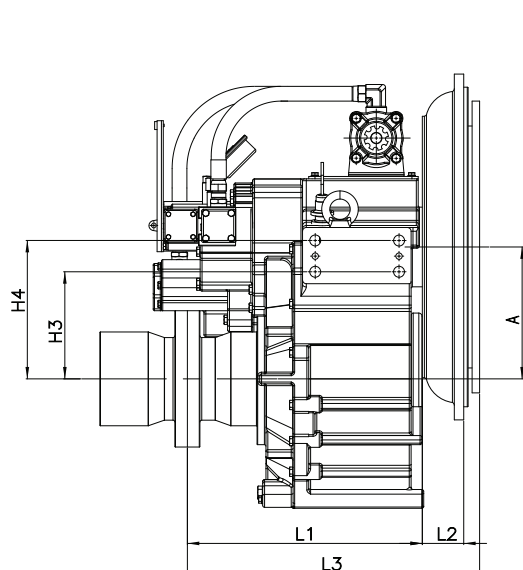


Standard Equipment

- Propeller shaft flange and coupling bolt sets.
- Oil cooler complete with fittings and flexible hoses.
- Control cable bracket and Clamp parts for connection of the push-pull cable.
- Mounting brackets (Plate Type for welding).
- Standard Input Rubber.

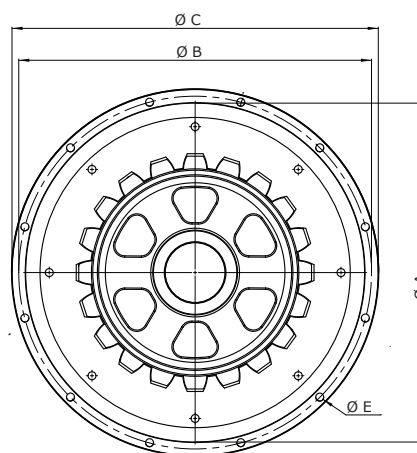
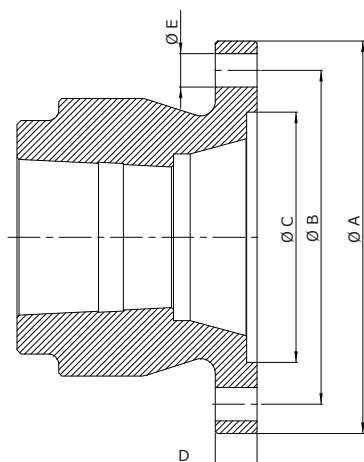
Option

- Dual stage input coupling.
- Trolling valve for slow-speed drive.
- Mounting brackets (L Shape).
- Electric clutch control.



Model	A	B	B1	B2	C	H1	H2	H3	H4	L1	Dry Weight kg (lb)
ML 180	331	674	337	337	425,5	336	626	25	115	427	475 (1047)

All dimensions in mm.



Output Coupling dimension

A	B	C	D	Bolt Holes	
				No.	Diameter (E)
287	240	160	28	6	25

SAE Bell Housing Dimension

SAE N°	DRIVING RING	A	B	C	L2	L3	Bolt Holes	
							No.	Diameter (E)
#1	14"	511,12	530,22	522,5	64	516,9	12	12
#2	11.5"	447,6	466,72	489	46	513,1	12	11

Masson Marine products are available all over the world through our network of dealers

Dealer:



www.masson-marine.com



contact@masson-marine.com

5 rue Henri Cavallier
89100 Saint Denis les Sens - France

