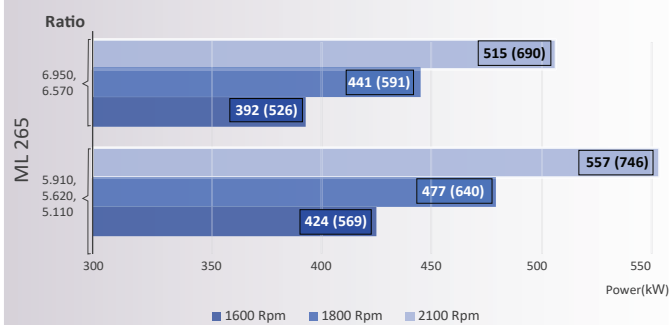


Model		ML 265	
Power/RPM	kW/RPM (hp/RPM)	0.265 (0.355)	0.245 (0.329)
Maximum rated input	kW (hp)	610 (830)	563 (766)
Ratio		5.11, 5.62, 5.91	6.57, 6.95
Maximum Input RPM		2300	
Dry Weight (kg)		900 (1984)	
SAE bell		#0, #1	
Offset type		Vertical	

## Description

- Robust design and easy onboard maintenance.
- Withstands various applications: pleasure, light, medium and continuous duty.
- Fully works tested, reliable and simple to install.
- Reverse reduction marine transmission with hydraulically actuated multi-disc clutches.
- Case hardened and precisely ground gear teeth for long life and smooth running.
- Robust cast iron casing for direct or remote mounting.
- Emergency "get home" capability.
- Design, manufacture and quality control standards comply with ISO.
- Suitable for twin installation with 100% rated power in ahead and astern condition.

Sample Powers kW (hp)

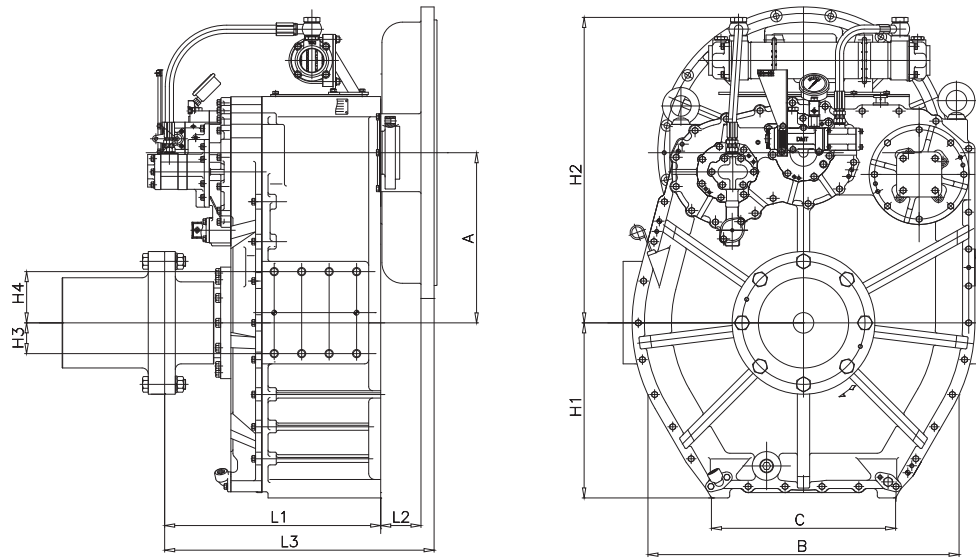


## Standard Equipment

- Propeller shaft flange and coupling bolt sets.
- Oil cooler complete with fittings and flexible hoses.
- Control cable bracket and Clamp parts for connection of the push-pull cable.
- Mounting brackets (Plate Type for welding).
- Standard Input Rubber.

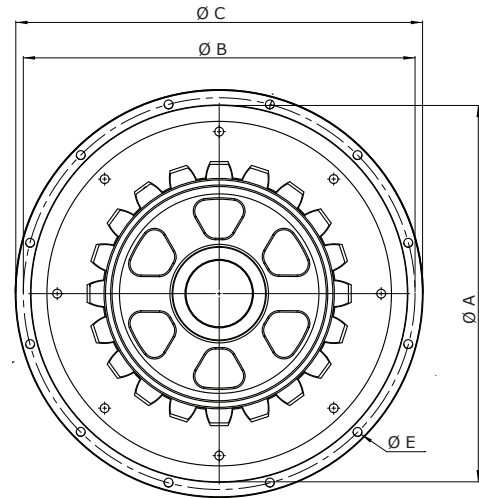
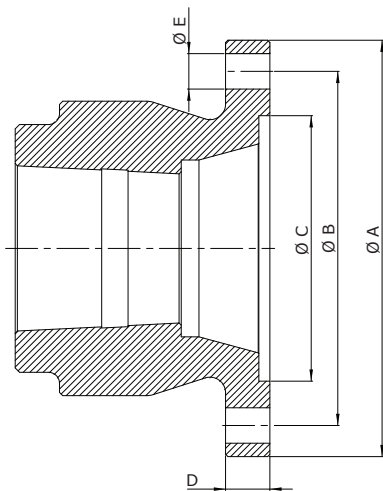
## Option

- Dual stage input coupling.
- Trolling valve for slow-speed drive.
- Mounting brackets ( L Shape ).
- Electric clutch control.
- Power Take Off : Live PTO.



Model	A	B	C	H1	H2	H3	H4	L1	Dry Weight kg (lb)
ML 265	415	758.8	448	427	745	75	125	527	900(1984)

**All dimensions in mm.**



### Output Coupling dimension

A	B	C	D	Bolt Holes	
				No.	Diameter (E)
348	300	220	26	8	25

### SAE Bell Housing Dimension

SAE N°	DRIVING RING	A	B	C	L2	L3	Bolt Holes	
							No.	Diameter (E)
#0	18"	647.65	679.45	711	130	673	16	13.5
	14"							
#1	14"	511.12	530.22	552.5	122	674	12	12

Masson Marine products are available all over the world through our network of dealers

Dealer:



[www.masson-marine.com](http://www.masson-marine.com)



[contact@masson-marine.com](mailto:contact@masson-marine.com)

5 rue Henri Cavallier

89100 Saint Denis les Sens - France

