

Model		ML 415		
Power/RPM	kW/RPM (hp/RPM)	0,465 (0,624)	0,407 (0,546)	0,331 (0,444)
Maximum rated input	kW (hp)	1070 (1434)	936 (1255)	761 (1021)
Ratio		1,43 ; 1,72; 2,03	2,46	2,75
Maximum input RPM		2300		
Dry weight	kg (lb)	660 (1455)		
SAE bell		#0, #1		
Offset type		Vertical offset		
Kinematics		Counter Engine Wise		

## Description

- Robust design and easy onboard maintenance.
- Withstands various applications: pleasure, light, medium and continuous duty.
- Fully works tested, reliable and simple to install.
- Reverse reduction marine transmission with hydraulically actuated multi-disc clutches.
- Case hardened and precisely ground gear teeth for long life and smooth running.
- Robust cast iron casing for direct or remote mounting.
- Emergency "get home" capability.
- Design, manufacture and quality control standards comply with ISO.
- Suitable for twin installation with 100% rated power in ahead and astern condition.

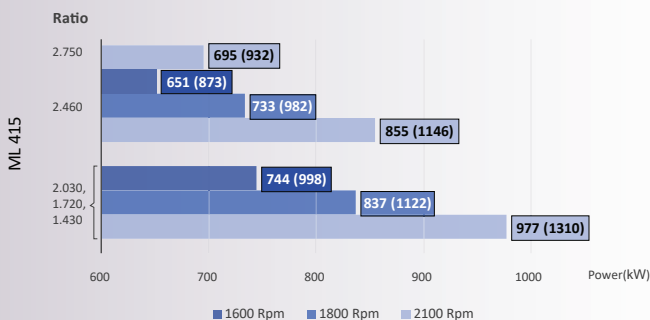
## Standard Equipment

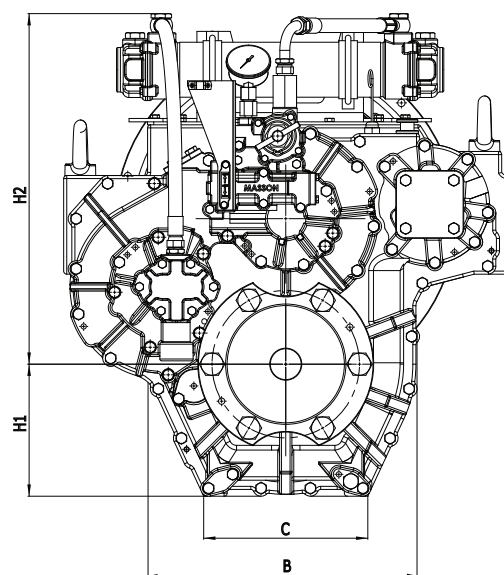
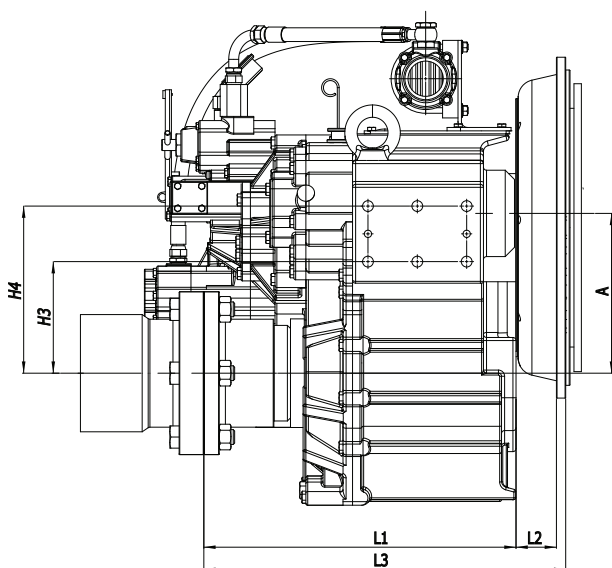
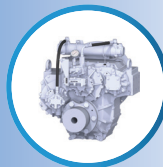
- Propeller shaft flange and coupling bolt sets.
- Oil cooler complete with fittings and flexible hoses.
- Control cable bracket and Clamp parts for connection of the push-pull cable.
- Mounting brackets (Plate Type for welding).
- Standard Input Rubber.

## Option

- Dual stage input coupling.
- Trolling valve for slow-speed drive.
- Mounting brackets ( L Shape ).
- Electric clutch control.
- Power Take Off : Live PTO.

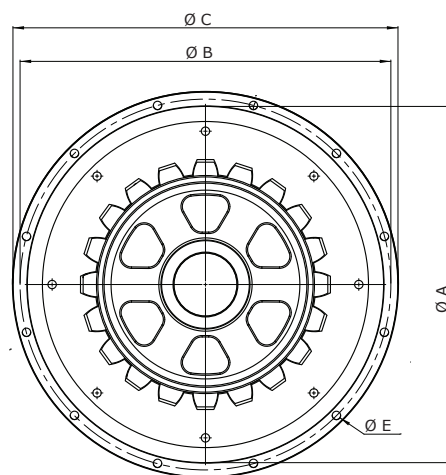
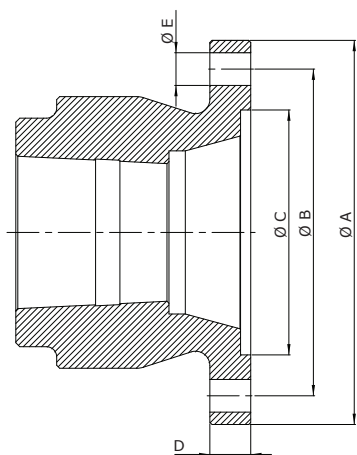
Sample Powers kW (hp)





Model	A	B	C	H1	H2	H3	H4	L1	Dry Weight kg (lb)
ML 415	235	436	266	215	582,8	180.9	270.9	505	660 (1455)

**All dimensions in mm.**



#### Output Coupling dimension

A	B	C	D	Bolt Holes	
				No.	Diameter (E)
285	240	180	25	6	25

#### SAE Bell Housing Dimension

SAE N°	DRIVING RING	A	B	C	L2	L3	Bolt Holes	
							No.	Diameter (E)
#0	18"	647,65	679,45	711	130	651	16	13,5
	14"					661		
#1	14"	511,12	530,22	552,5	122	653	12	12

*Masson Marine products are available all over the world through our network of dealers*

Dealer:



[www.masson-marine.com](http://www.masson-marine.com)



[contact@masson-marine.com](mailto:contact@masson-marine.com)

5 rue Henri Cavallier  
89100 Saint Denis les Sens - France

