

Model	W1900					
	Power/RPM	kW/RPM (hp/RPM)	Maximum rated input	kW (hp)	Ratio	Maximum input RPM
W1900	0,189 (0,253)	529 (710)			1,057	2800
					1,483	
					2,000	
					2,429	
	0,155 (0,208)		434 (582)		3,000	
	Dry weight	kg(lb)	410 (907)			
	SAE bell		#0, #1			
	Type		Vertical offset			
	Kinematics		Non Reversible, Engine Wise and Counter Engine Wise			

Description

- Robust design and easy onboard maintenance.
- Robust design also withstands continuous duty in workboat, dredger applications.
- Fully works tested, reliable and simple to install.
- Reverse reduction marine transmission with hydraulically actuated multi-disc clutches.
- Case hardened and precisely ground gear teeth for long life and smooth running.
- Robust cast iron casing for direct or remote mounting.
- Emergency "get home" capability.
- Design, manufacture and quality control standards comply with ISO.
- Suitable for twin installation with 100% rated power in ahead and astern condition.

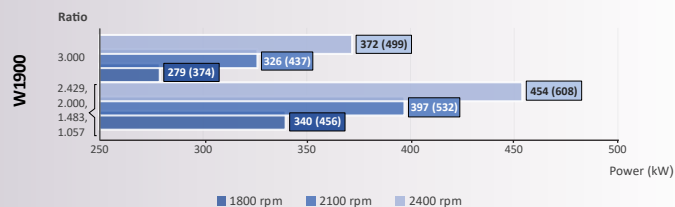
Standard Equipment

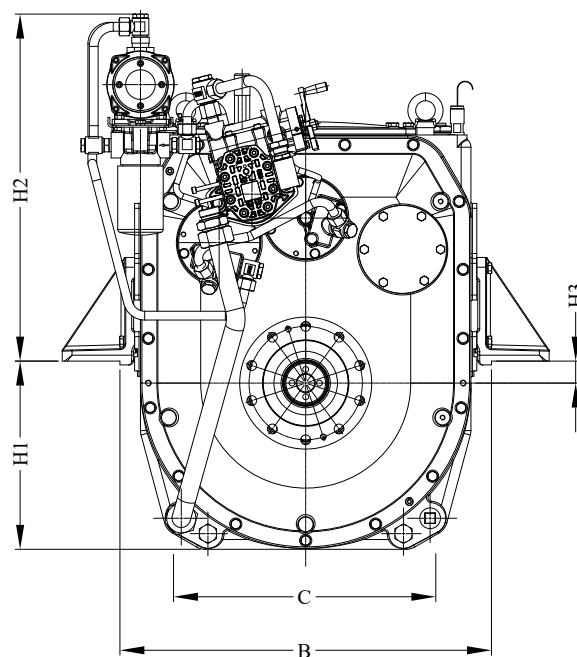
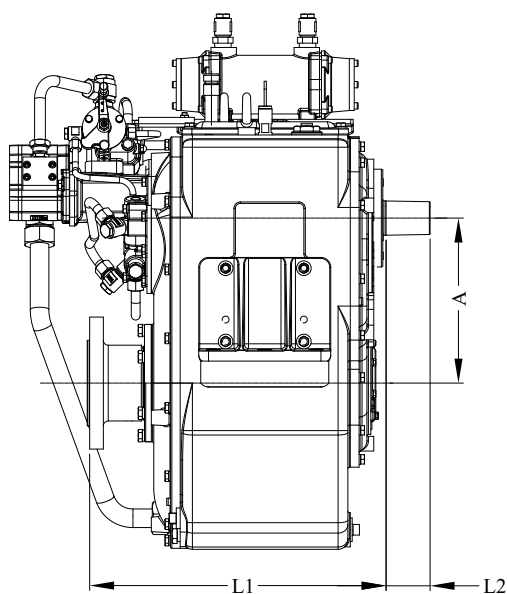
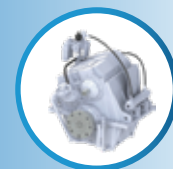
- Oil cooler complete with fittings and flexible hoses.
- Integrated Brackets.
- Free Standing.
- Lube Oil Pump.

Option

- Engine-matched torsional coupling.
- Propeller shaft flange and coupling bolt set.
- Classification by all major Classification Societies on request.
- Electric trolling valve for slow-speed drive.
- Shaft brake.
- Electric clutch control.

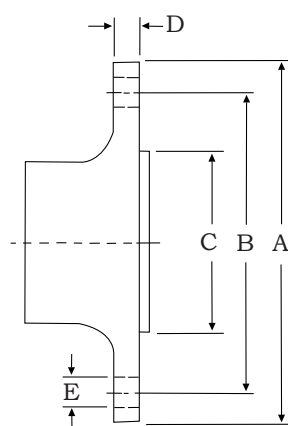
Sample Powers kW (hp)





Model	Bell housing	A	B	C	H1	H2	H3	L1	L2	L3	Dry Weight kg (lb)
W1900	#0, #1	165	630	430	200	570	-20	580	90	410	410 (907)

All dimensions in mm.



Output Coupling dimension

A		B		C		D		Bolt Holes		
								No.	Diameter (E)	
mm	inch	mm	inch	mm	inch	mm	inch		mm	in
230	9,1	190	7,5	140	5,5	22	0,9	8	15,5	0,6

Masson Marine products are available all over the world through our network of dealers

Dealer:



www.masson-marine.com



contact@masson-marine.com

5 rue Henri Cavallier
89100 Saint Denis les Sens - France

