

Model		W20200NR EW			
Power/RPM	kW/RPM (hp/RPM)	Maximum rated input	kW (hp)	Ratio	Maximum input RPM
2,124 (2,848)		2722 (3650)		2,288	1281
				2,604	
				3,107	
				3,512	
1,997 (2,678)		3005 (4030)		4,124	1504
1,803 (2,418)		2885 (3869)		5,032	1600
1,626 (2,181)		2602 (3489)		5,900	
1,390 (1,864)		2224 (2982)		7,217	
1,301 (1,745)		2082 (2791)		7,843	
1,486 (1,993)		2378 (3188)		8,335	
1,390 (1,864)		2224 (2982)		9,040	
1,301 (1,745)		2082 (2791)		9,825	
Dry weight	kg(lb)	5700 (12570)			
SAE bell		Free standing			
Type		Vertical offset			
Kinematics		Non Reversible and Engine Wise			

Description

- Robust design and easy onboard maintenance.
- Robust design also withstands continuous duty in workboat, dredger applications.
- Fully works tested, reliable and simple to install.
- Reverse reduction marine transmission with hydraulically actuated multi-disc clutches.
- Case hardened and precisely ground gear teeth for long life and smooth running.
- Robust cast iron casing for direct or remote mounting.
- Emergency "get home" capability.
- Design, manufacture and quality control standards comply with ISO.
- Suitable for twin installation with 100% rated power in ahead and astern condition.

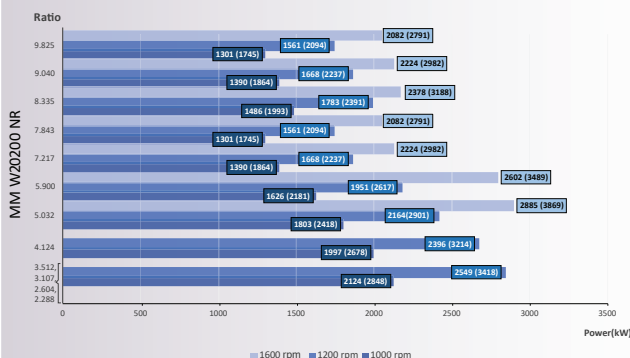
Standard Equipment

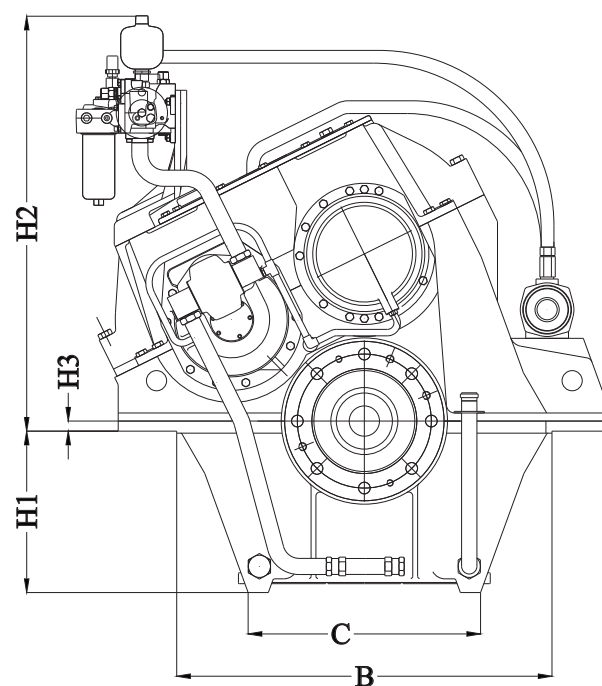
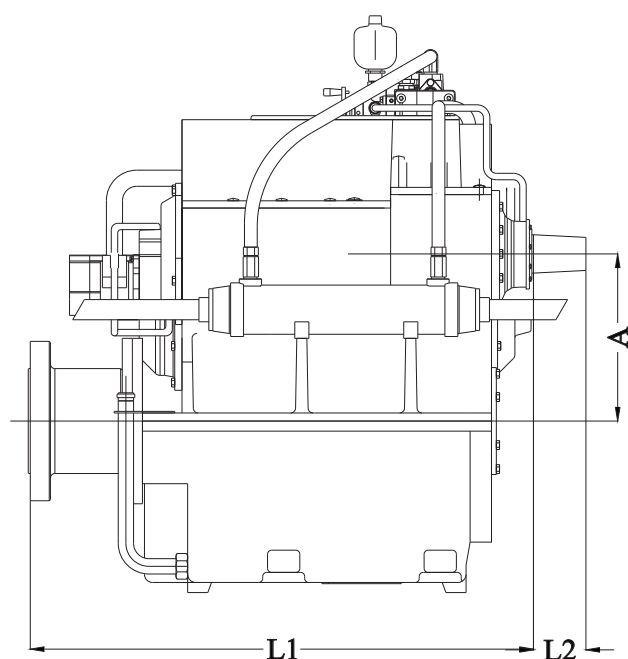
- Oil cooler complete with fittings and flexible hoses.
- Integrated Brackets.
- Free Standing.
- Lube Oil Pump.

Option

- Engine-matched torsional coupling.
- Propeller shaft flange and coupling bolt set.
- Classification by all major Classification Societies on request.
- PTO (live or clutchable).
- Electric trolling valve for slow-speed drive.
- Shaft brake.
- Electric clutch control.

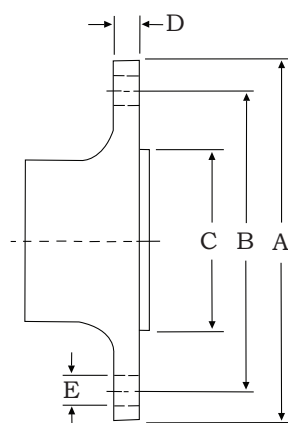
Sample Powers (kW/hp)





Model	A	B	C	H1	H2	H3	L1	L2	Dry Weight kg (lb)
W20200NR EW	720	1420	712	685	1491	-35	1415	155	5700(12570)

All dimensions in mm.



Output Coupling dimension										
A		B		C		D		Bolt Holes		
								No.	Diameter (E)	
mm	inch	mm	inch	mm	inch	mm	inch		mm	in
550	21,7	450	17,7	280	11,0	50,0	1,97	12	43,0	1,69

Masson Marine products are available all over the world through our network of dealers

Dealer:



www.masson-marine.com



contact@masson-marine.com

5 rue Henri Cavallier

89100 Saint Denis les Sens - France

