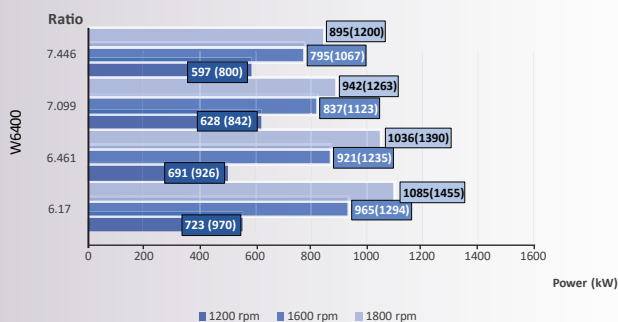


Model W6400					
	Power/RPM	kW/RPM (hp/RPM)	Maximum rated input	kW (hp)	Ratio
W6400	0,603 (0,808)		1266 (1698)		6,170
	0,576 (0,772)		1209 (1621)		6,461
	0,523 (0,702)		1099 (1474)		7,099
	0,497 (0,667)		1044 (1400)		7,446
					2100
	Dry weight	kg(lb)	2000 (4410)		
	SAE bell		#0, #00		
	Type		Vertical offset		
	Kinematics		Engine Wise and Counter Engine Wise		

Description

- Robust design and easy onboard maintenance.
- Robust design also withstands continuous duty in workboat, dredger applications.
- Fully works tested, reliable and simple to install.
- Reversing reduction marine transmission with hydraulically actuated multi-disc clutches.
- Case hardened and precisely ground gear teeth for long life and smooth running.
- Robust cast iron casing for direct or remote mounting.
- Emergency "get home" capability.
- Design, manufacture and quality control standards comply with ISO.
- Suitable for twin installation with 100% rated power in ahead and astern condition.

Sample Powers kW (hp)

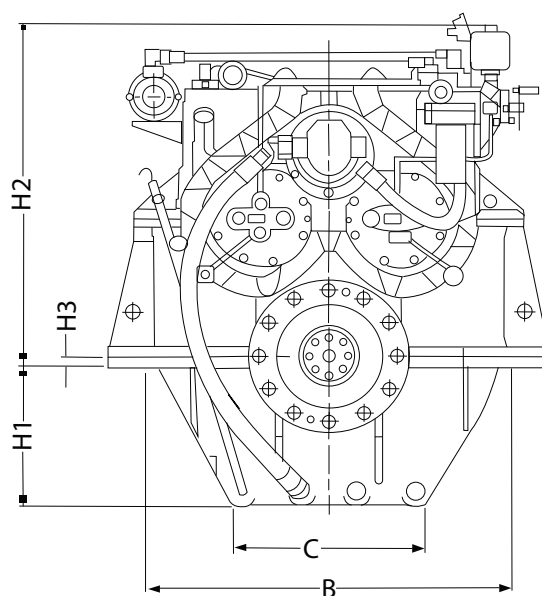
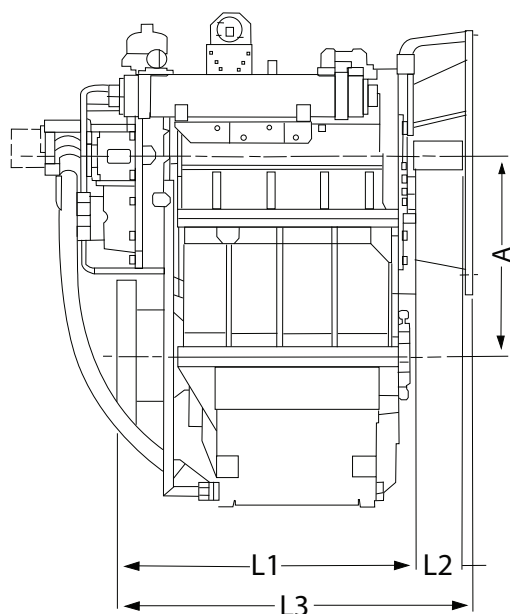


Standard Equipment

- Oil cooler complete with fittings and flexible hoses.
- Integrated Brackets.
- Free Standing.
- Lube Oil Pump.

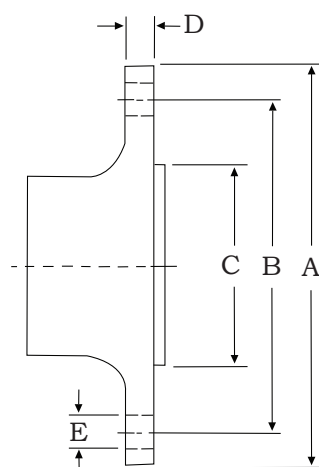
Option

- Engine-matched torsional coupling.
- Propeller shaft flange and coupling bolt set.
- Classification by all major Classification Societies on request.
- PTO (live or clutchable).
- Electric trolling valve for slow-speed drive.
- Shaft brake.
- Electric clutch control.



Model	Bell housing	A	B	C	H1	H2	H3	L1	L2	L3	Dry Weight kg (lb)
W6400	#0,#00	500	848	470	315	900	0	807	130	960	2000 (4410)

All dimensions in mm.



Output Coupling dimension

A		B		C		D		Bolt Holes		
								No.	Diameter (E)	
mm	inch	mm	inch	mm	inch	mm	inch		mm	in
390	15,4	336	13,2	250	9,8	40	1,6	10	31	1,2

Masson Marine products are available all over the world through our network of dealers

Dealer:



www.masson-marine.com



contact@masson-marine.com
5 rue Henri Cavallier
89100 Saint Denis les Sens - France

