

Model		W4400			
	Power/RPM kW/RPM (hp/RPM)	Maximum rated input	kW (hp)	Ratio	Maximum input RPM
W4400	0,540 (0,724)	1242 (1665)		3,026	2300
				3,486	
				4,032	
				4,448	
				5,077	
				5,542	
				5,913	
	Dry weight	kg(lb)	1270 (2800)		
	SAE bell		#0, #1		
	Type		Vertical offset		
	Kinematics		Reversible or Non-Reversible ( Engine-Wise or Counter-Engine-Wise )		

## Description

- Robust design and easy onboard maintenance.
- Robust design also withstands continuous duty in workboat, dredger applications.
- Fully works tested, reliable and simple to install.
- Reverse reduction marine transmission with hydraulically actuated multi-disc clutches.
- Case hardened and precisely ground gear teeth for long life and smooth running.
- Robust cast iron casing for direct or remote mounting.
- Emergency "get home" capability.
- Design, manufacture and quality control standards comply with ISO.
- Suitable for twin installation with 100% rated power in ahead and astern condition.

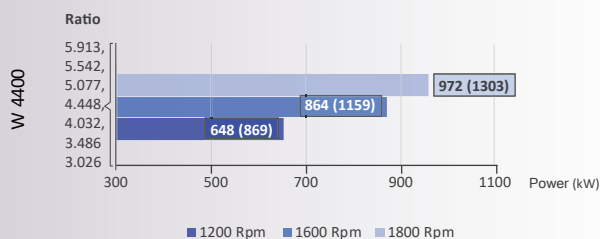
## Standard Equipment

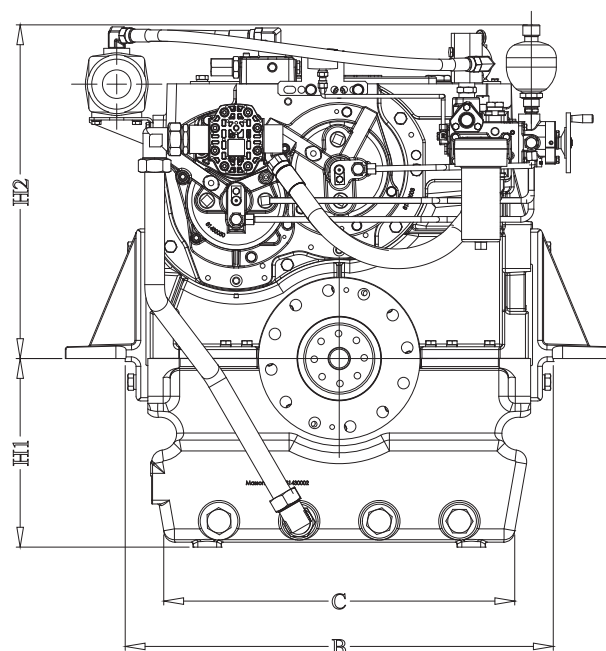
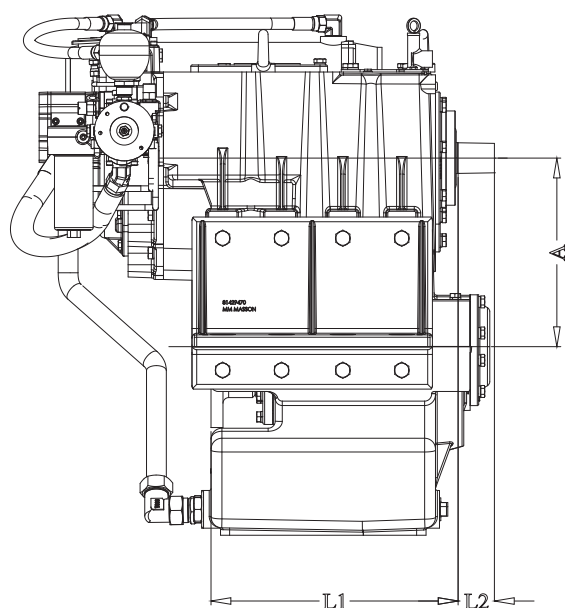
- Oil cooler complete with fittings and flexible hoses.
- Free Standing.
- Lube Oil Pump.

## Option

- Engine-matched torsional coupling.
- Propeller shaft flange and coupling bolt set.
- Classification by all major Classification Societies on request.
- PTO (live or clutchable).
- Electric trolling valve for slow-speed drive.
- Shaft brake.
- Electric clutch control.

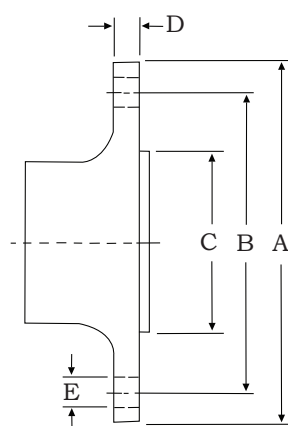
## Sample Powers (kW/hp)





Model	Bell housing	A	B	C	H1	H2	H3	L1	L2	L3	Dry Weight kg (lb)
W4400	#0,#1	400	908	800	400	705	0	524	77	637	1270 (2800)

**All dimensions in mm.**



### Output Coupling dimension

A		B		C		D		Bolt Holes		
								No.	Diameter (E)	
mm	inch	mm	inch	mm	inch	mm	inch		mm	in
343	13,5	292.1	11,5	177.5	7	25,4	1	12	24,5	1

*Masson Marine products are available all over the world through our network of dealers*



 [www.masson-marine.com](http://www.masson-marine.com) 

contact@masson-marine.com  
5 rue Henri Cavallier  
89100 Saint Denis les Sens - France

