



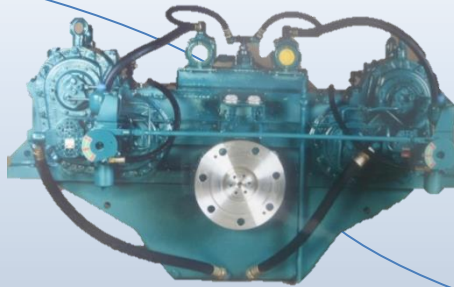
Sailing Boat



SANTA MARIA MANUELA

Rebuilt by :
Navalria Yards (Portugal)
Factoria Naval Marin (Spain)

Pascoal, Portugal (Owner)



**2x Volvo engines,
746 kW @ 1500 rpm**

Masson Marine supply
- Gearbox type **ESY281**
(2input/1output)
- CPP type **MM 480, Ø1800**

MASSON MARINE SAS

5 Rue Henri-Cavallier - 89100 Saint Denis les Sens France

Tel : +33 (0)3 86 95 62 00 / Fax : +33 (0)3 86 95 13 78

contact@masson-marine.com