

Model		W 18000C			
Power/RPM	Kw/RPM (Hp/RPM)	Maximum rated input	Kw (Hp)	Ratio	Maximum Input RPM
1.560	(2.092)	2574	(3452)	2.425	1650
2.524	(3.385)	3761	(5043)	2.457	1490
2.485	(3.332)	3762	(5045)	2.495	1514
2.126	(2.851)	3508	(4704)	2.917	1650
1.560	(2.092)	2574	(3452)	3.976	
1.404	(1.883)	2317	(3107)	4.418	
1.260	(1.690)	2079	(2788)	4.922	
1.170	(1.569)	1931	(2589)	5.299	
1.086	(1.456)	1792	(2403)	5.711	
1.170	(1.569)	1931	(2589)	6.762	
1.086	(1.456)	1792	(2403)	7.288	
Dry Weight	kg(lb)	3650 (8050)			
SAE bell		-			
Offset type		Coaxial			
Kinematics		Non Reversible, Engine Wise and Counter Engine Wise			

Description

- Robust design and easy onboard maintenance.
- Robust design also withstands continuous duty in workboat, dredger applications.
- Fully works tested, reliable and simple to install.
- Reverse reduction marine transmission with hydraulically actuated multi-disc clutches.
- Case hardened and precisely ground gear teeth for long life and smooth running.
- Robust cast iron casing for direct or remote mounting.
- Emergency "get home" capability.
- Design, manufacture and quality control standards comply with ISO.
- Suitable for twin installation with 100% rated power in ahead and astern condition.

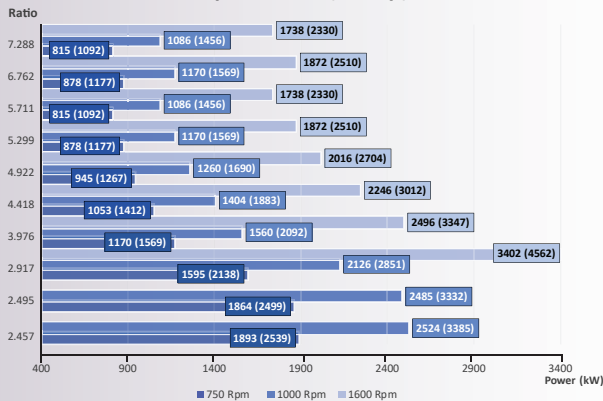
Standard Equipment

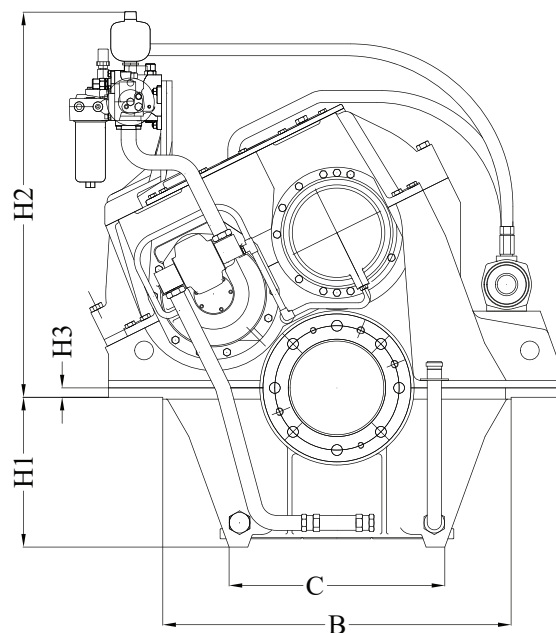
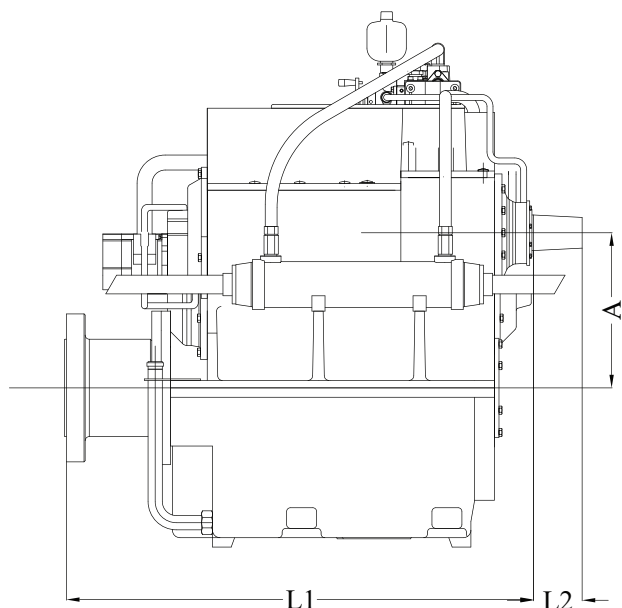
- Oil cooler complete with fittings and flexible hoses.
- Integrated Brackets.
- Free Standing.
- Lube Oil Pump.

Option

- Engine-matched torsional coupling.
- Propeller shaft flange and coupling bolt set.
- Classification by all major Classification Societies on request.
- PTO (live or clutchable).
- Electric trolling valve for slow-speed drive.
- Shaft brake.
- Electric clutch control.

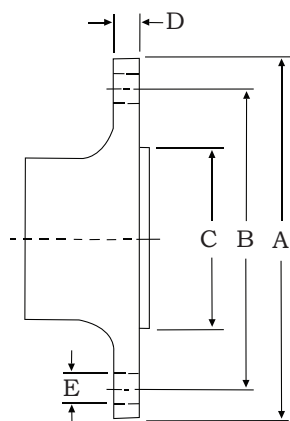
Sample Powers (kw/hp)





Model	Bell housing	A	B	C	H1	H2	H3	L1	L2	Weight kg (lb)
W18000C	-	0	1080	768	480	1143	-30	1297	176	3650(8050)

All dimensions in mm.



Output Coupling dimension

A		B		C		D		Bolt Holes		
mm	inch	mm	inch	mm	inch	mm	inch	No.	Diameter (E)	
									mm	in
450	17.7	375	14.8	250	9.8	60	2.4	8	39	1.53

Masson Marine products are available all over the world through our network of dealers



f www.masson-marine.com **in**

contact@masson-marine.com
5 rue Henri Cavallier
89100 Saint Denis les Sens - France

