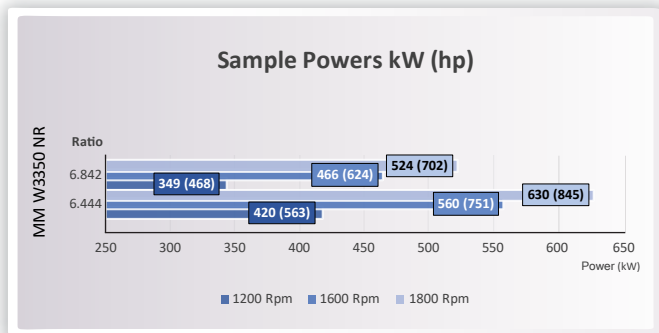


Model W3350 NR						
	Power/RPM	kW/RPM (hp/RPM)	Maximum rated input	kW (hp)	Ratio	Maximum input RPM
W3350 NR	0,350 (0,469)		770 (1033)		6,444	2200
	0,291 (0,390)		640 (859)		6,842	
	Dry weight	kg(lb)	1260 (2780)			
	SAE bell	#0, #1				
	Type	Vertical offset				
	Kinematics	Non Reversible				

## Description

- Robust design and easy onboard maintenance.
- Robust design also withstands continuous duty in workboat, dredger applications.
- Fully works tested, reliable and simple to install.
- Non-reversing reduction marine transmission with hydraulically actuated multi-disc clutches.
- Case hardened and precisely ground gear teeth for long life and smooth running.
- Robust cast iron casing for direct or remote mounting.
- Emergency "get home" capability.
- Design, manufacture and quality control standards comply with ISO.
- Suitable for twin installation with 100% rated power in ahead and astern condition.

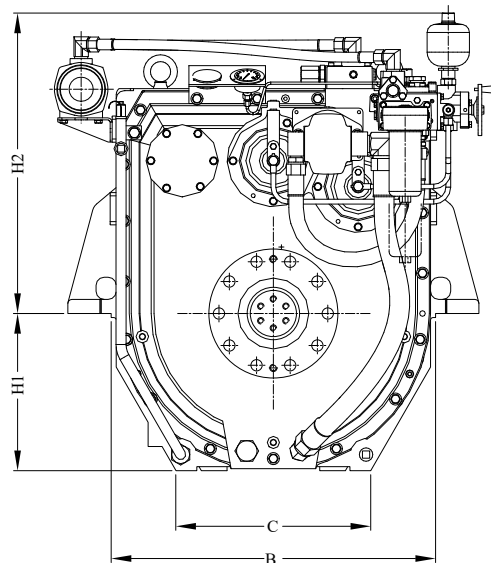
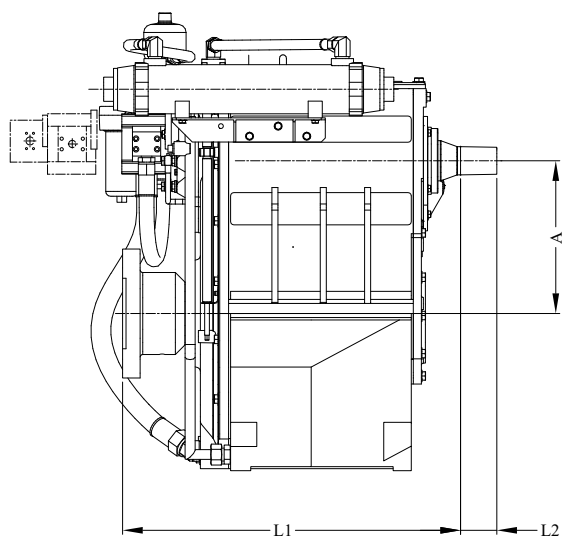
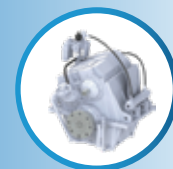


## Standard Equipment

- Oil cooler complete with fittings and flexible hoses.
- Integrated Brackets.
- Free Standing.
- Lube Oil Pump.

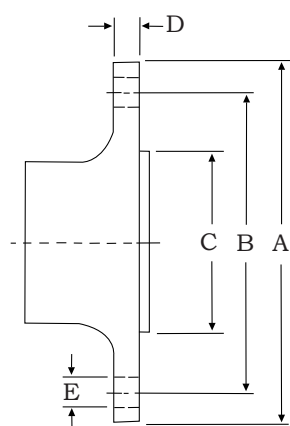
## Option

- Engine-matched torsional coupling.
- Propeller shaft flange and coupling bolt set.
- Classification by all major Classification Societies on request.
- PTO (live or clutchable).
- Electric trolling valve for slow-speed drive.
- Shaft brake.
- Electric clutch control.
- Trailing pump.



Model	Bell housing	A	B	C	H1	H2	L1	L2	L3	Dry Weight kg (lb)
W3350 NR	SAE 0,1	379	806	484	390	746	864	90	933	1260 (2780)

**All dimensions in mm.**



### Output Coupling dimension

A		B		C		D		Bolt Holes		
mm	inch	mm	inch	mm	inch	mm	inch	No.	Diameter (E)	
									mm	in
320	12,6	270	10,6	175	6,89	43,5	1,69	10	27,5	1,08

*Masson Marine products are available all over the world through our network of dealers*



[www.masson-marine.com](http://www.masson-marine.com)

contact@masson-marine.com

5 rue Henri Cavallier

89100 Saint Denis les Sens - France

