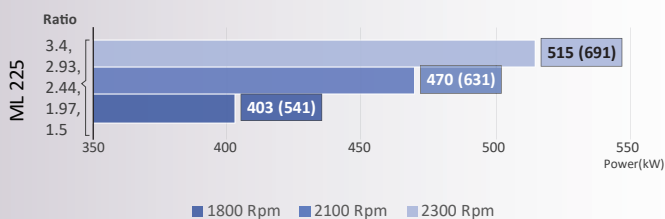


Model	ML 225	
Power/RPM	kW/RPM (hp/RPM)	0,224 (0,300)
Maximum rated input	kW (hp)	560 (750)
Ratio	1,50 ; 1,97 ; 2,44 ; 2,93 ; 3,40	
Maximum input RPM	2500	
Dry weight	kg (lb)	400 (881)
SAE bell	#0, #1	
Offset type	Vertical offset	
Kinematics	Counter Engine Wise	

Description

- Robust design and easy onboard maintenance.
- Withstands various applications: pleasure, light, medium and continuous duty.
- Fully works tested, reliable and simple to install.
- Reverse reduction marine transmission with hydraulically actuated multi-disc clutches.
- Case hardened and precisely ground gear teeth for long life and smooth running.
- Robust cast iron casing for direct or remote mounting.
- Emergency "get home" capability.
- Design, manufacture and quality control standards comply with ISO.
- Suitable for twin installation with 100% rated power in ahead and astern condition.

Sample Powers kW (hp)

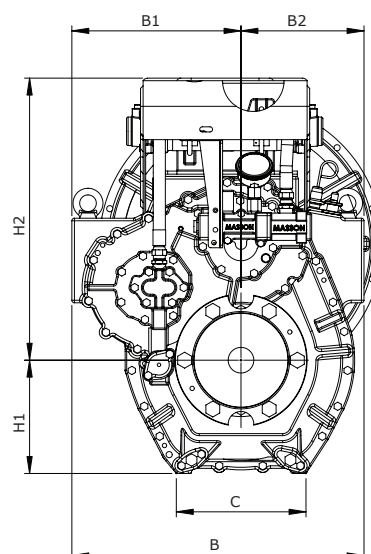
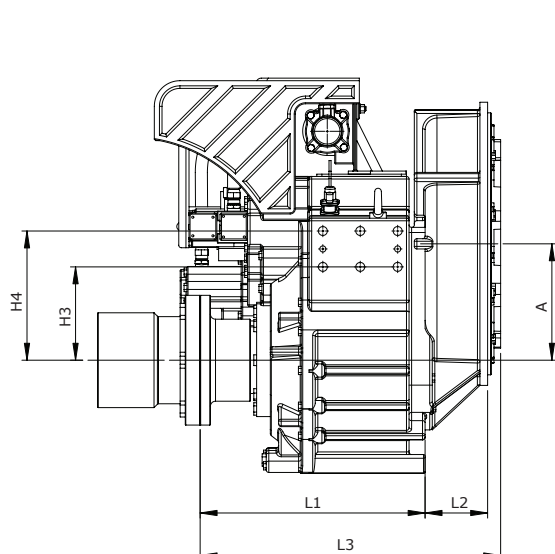


Standard Equipment

- Propeller shaft flange and coupling bolt sets.
- Oil cooler complete with fittings and flexible hoses.
- Control cable bracket and Clamp parts for connection of the push-pull cable.
- Mounting brackets (Plate Type for welding).
- Standard Input Rubber.

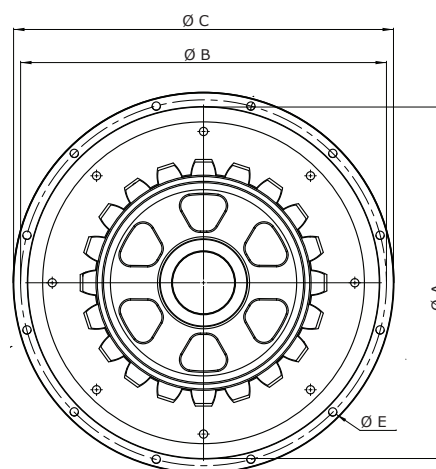
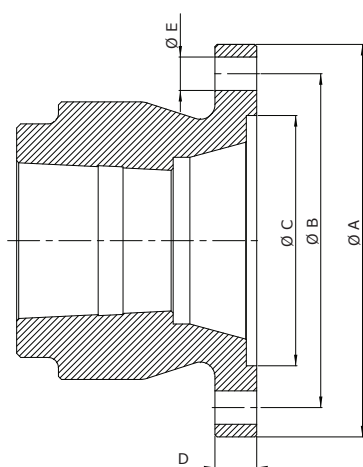
Option

- Dual stage input coupling.
- Trolling valve for slow-speed drive.
- Mounting brackets (L Shape).
- Electric clutch control.



Model	A	B	B1	B2	C	H1	H2	H3	H4	L1	Dry Weight kg (lb)
ML 225	227	570	330	240	254	221	550	182	252	439	400(881)

All dimensions in mm.



Output Coupling dimension

A	B	C	D	Bolt Holes	
				No.	Diameter (E)
254	220	140	20	6	21

SAE Bell Housing Dimension

SAE N°	DRIVING RING	A	B	C	L2	L3	Bolt Holes	
							No.	Diameter (E)
#0	18"	648	679	711	130	585	16	13,5
	14"					595		
#1	14"	511	530	553	122	586	12	12

Masson Marine products are available all over the world through our network of dealers

Dealer:



www.masson-marine.com



contact@masson-marine.com

5 rue Henri Cavallier
89100 Saint Denis les Sens - France

