

Model		ML 96		
Power/RPM	kW/RPM (hp/RPM)	0,091 (0,122)	0,088 (0,118)	0,076 (0,102)
Maximum rated input	kW (hp)	273 (366)	264 (354)	228 (306)
Ratio		4,07; 4,50; 4,95	5,29	5,95
Maximum input RPM		3000		
Dry weight	kg (lb)	263 (579)		
SAE bell		#1, #2 , #3		
Offset type		Vertical offset		
Kinematics		Counter Engine Wise		

## Description

- Robust design and easy onboard maintenance.
- Withstands various applications: pleasure, light, medium and continuous duty.
- Fully works tested, reliable and simple to install.
- Reverse reduction marine transmission with hydraulically actuated multi-disc clutches.
- Case hardened and precisely ground gear teeth for long life and smooth running.
- Robust cast iron casing for direct or remote mounting.
- Emergency "get home" capability.
- Design, manufacture and quality control standards comply with ISO.
- Suitable for twin installation with 100% rated power in ahead and astern condition.

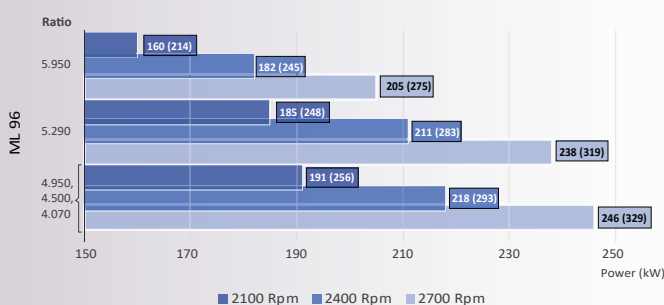
## Standard Equipment

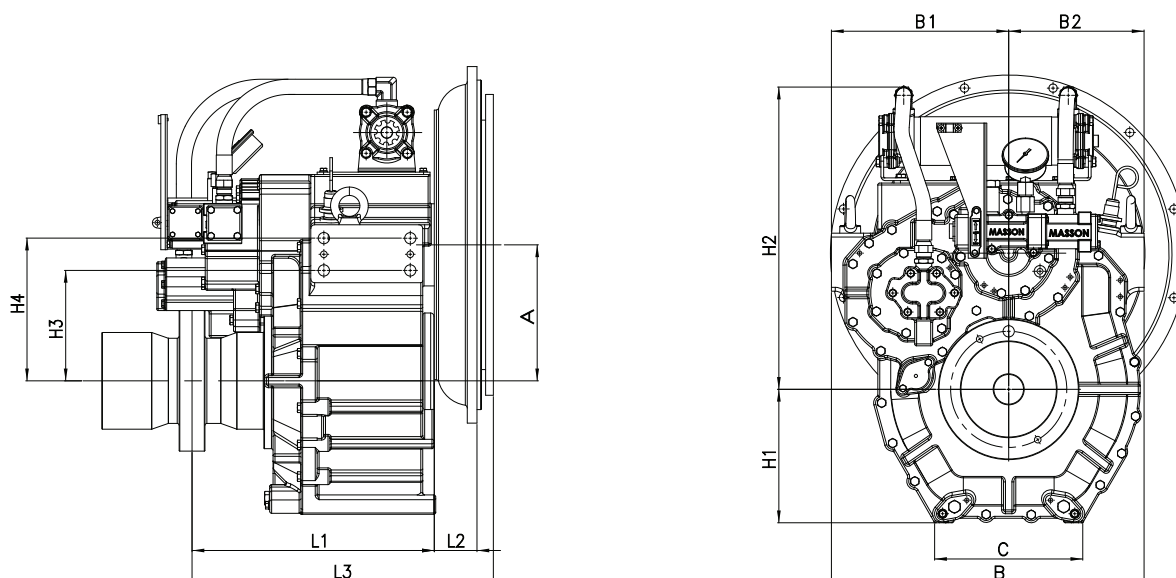
- Propeller shaft flange and coupling bolt sets.
- Oil cooler complete with fittings and flexible hoses.
- Control cable bracket and Clamp parts for connection of the push-pull cable.
- Mounting brackets (Plate Type for welding).
- Standard Input Rubber.

## Option

- Dual stage input coupling.
- Trolling valve for slow-speed drive.
- Mounting brackets ( L Shape ).
- Electric clutch control.

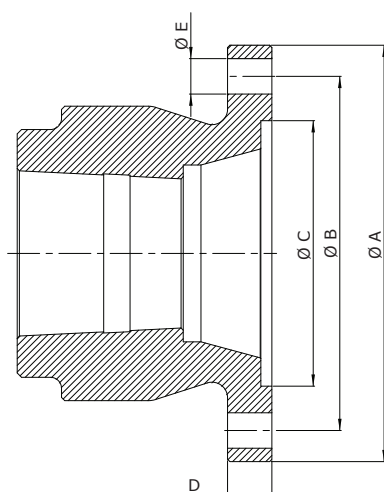
Sample Powers kW (hp)





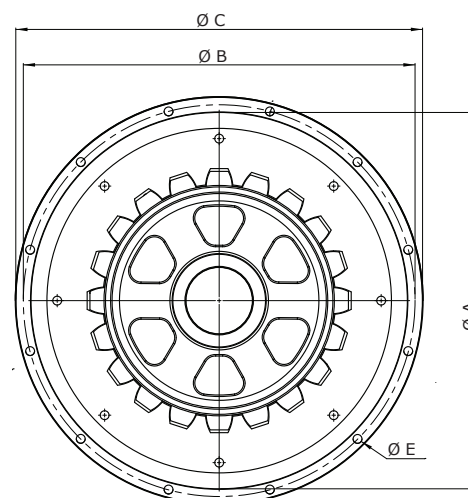
Model	A	B	B1	B2	C	H1	H2	H3	H4	L1	Dry Weight kg (lb)
ML 96	274	568	284	284	370	289	528	80	150	351	263 (579)

**All dimensions in mm.**



### Output Coupling dimension

A	B	C	D	Bolt Holes	
				No.	Diameter (E)
188	160	120	20	6	16



### SAE Bell Housing Dimension

SAE N°	DRIVING RING	A	B	C	L2	L3	Bolt Holes	
							No.	Diameter (E)
#1	14"	511,12	530,22	552,5	81	457,4	12	12
#2	11.5"	447,6	466,72	489	44,5	435,1	12	11
#3	11.5"	409,5	428,62	451	44,5	435,1	12	11

**Masson Marine products are available all over the world through our network of dealers**

Dealer:



[www.masson-marine.com](http://www.masson-marine.com)



[contact@masson-marine.com](mailto:contact@masson-marine.com)

5 rue Henri Cavallier

89100 Saint Denis les Sens - France

