

| Model | | W3300 | | | |
|---------------|--------------------|-------------------------------------|------------|-------|----------------------|
| Power/RPM | kW/RPM (hp/RPM) | Maximum rated input | kW (hp) | Ratio | Maximum input RPM |
| 0,296 (0,397) | | 651 (873) | | 6,444 | 2200 |
| 0,280 (0,375) | | 616 (826) | | 6,556 | |
| 0,259 (0,347) | | 570 (764) | | 6,941 | |
| Dry weight | kg(lb) | 1260 (2780) | | | |
| SAE bell | | #0, #1 | | | |
| Type | | Vertical offset | | | |
| Kinematics | | Engine Wise and Counter Engine Wise | | | |

Description

- Robust design and easy onboard maintenance.
- Robust design also withstands continuous duty in workboat, dredger applications.
- Fully works tested, reliable and simple to install.
- Reverse reduction marine transmission with hydraulically actuated multi-disc clutches.
- Case hardened and precisely ground gear teeth for long life and smooth running.
- Robust cast iron casing for direct or remote mounting.
- Emergency "get home" capability.
- Design, manufacture and quality control standards comply with ISO.
- Suitable for twin installation with 100% rated power in ahead and astern condition.

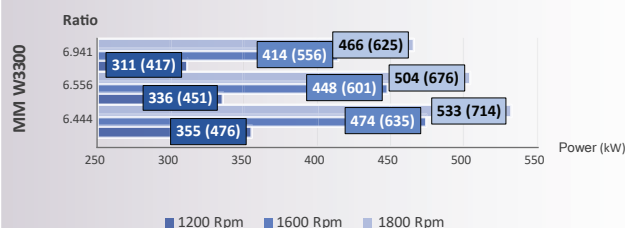
Standard Equipment

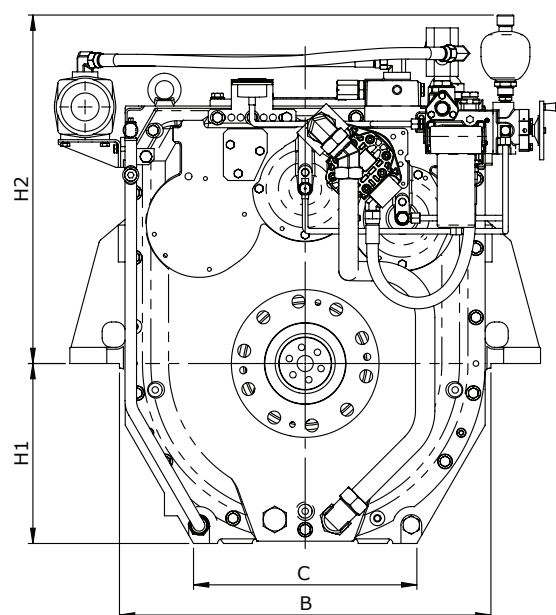
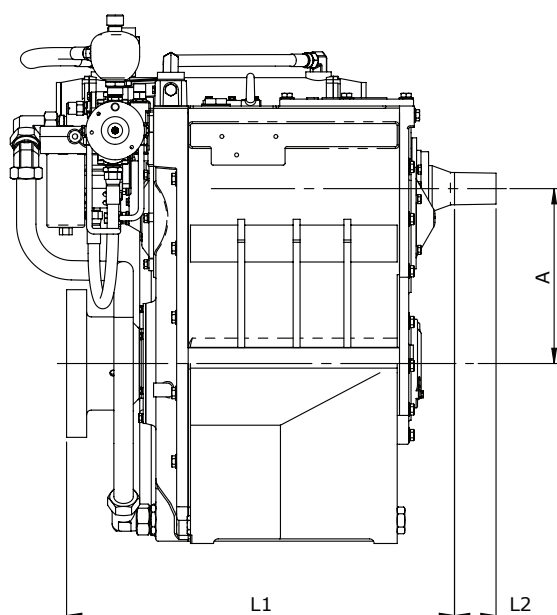
- Oil cooler complete with fittings and flexible hoses.
- Integrated Brackets.
- Free Standing.
- Lube Oil Pump.

Option

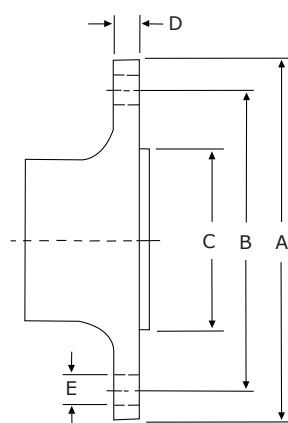
- Engine-matched torsional coupling.
- Propeller shaft flange and coupling bolt set.
- Classification by all major Classification Societies on request.
- PTO (live or clutchable).
- Electric trolling valve for slow-speed drive.
- Shaft brake.
- Electric clutch control.
- Trailing pump.

Sample Powers kW (hp)





| Model | Bell Housing SAE N ^o | A | B | C | H1 | H2 | H3 | L1 | L2 | Dry Weight kg(lb) |
|-------|------------------------------------|------------------|-----|-----|-----|-----|----|-----|----|----------------------|
| | | Dimensions in mm | | | | | | | | |
| W3300 | #0, #1 | 379 | 806 | 484 | 390 | 746 | 0 | 839 | 90 | 1260 (2780) |



Output Coupling dimension

| A | | B | | C | | D | | Bolt Holes | | |
|-----|------|-----|------|-----|------|------|------|------------|--------------|------|
| | | | | | | | | No. | Diameter (E) | |
| mm | inch | mm | inch | mm | inch | mm | inch | | mm | in |
| 320 | 21,6 | 270 | 10,6 | 175 | 6,89 | 43,5 | 1,69 | 10 | 27,5 | 1,08 |

Masson Marine products are available all over the world through our network of dealers



 www.masson-marine.com 

contact@masson-marine.com
5 rue Henri Cavallier
89100 Saint Denis les Sens - France

