

Model		W8400			
Power/RPM	kW/RPM (hp/RPM)	Maximum rated input	kW (hp)	Ratio	Maximum input RPM
0,974 (1,306)	2045 (2743)	2100	2100	5,069	2100
				5,556	
				6,080	
				6,375	
				7,045	
				7,476	
Dry weight	kg (lb)	3200 (7055)			
SAE bell		#00 / Free standing			
Type		Vertical offset			
Kinematics		Reversible or Non-Reversible (Engine-Wise or Counter-Engine-Wise)			

Description

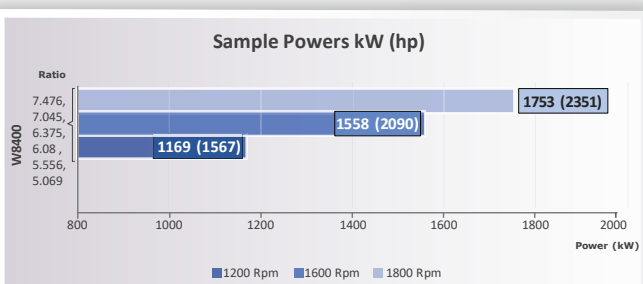
- Robust design and easy onboard maintenance.
- Robust design also withstands continuous duty in workboat, dredger applications.
- Fully works tested, reliable and simple to install.
- Reverse reduction marine transmission with hydraulically actuated multi-disc clutches.
- Case hardened and precisely ground gear teeth for long life and smooth running.
- Robust cast iron casing for direct or remote mounting.
- Emergency "get home" capability.
- Design, manufacture and quality control standards comply with ISO.
- Suitable for twin installation with 100% rated power in ahead and astern condition.

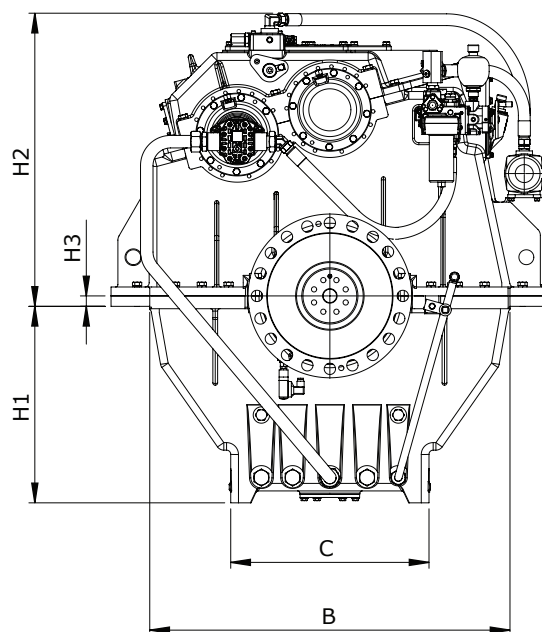
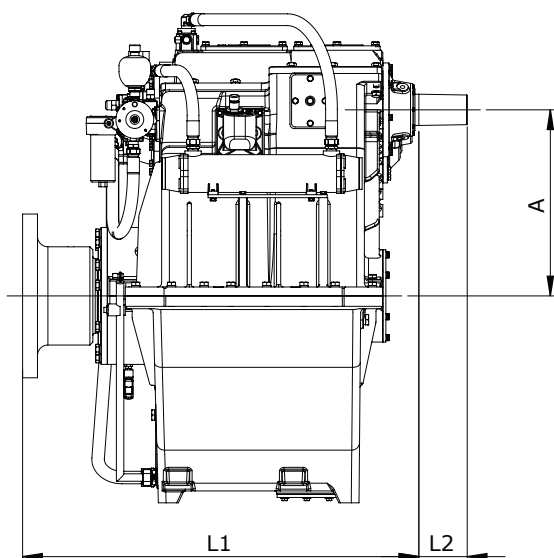
Standard Equipment

- Oil cooler complete with fittings and flexible hoses.
- Integrated Brackets.
- Free Standing.
- Lube Oil Pump.

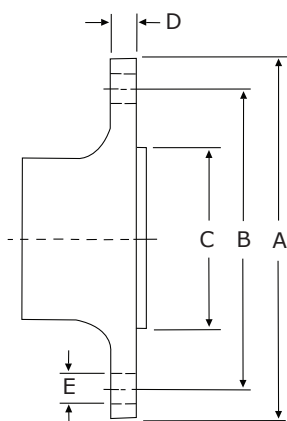
Option

- Engine-matched torsional coupling.
- Propeller shaft flange and coupling bolt set.
- Classification by all major Classification Societies on request.
- PTO (live or clutchable).
- Electric trolling valve for slow-speed drive.
- Shaft brake.
- Electric clutch control.





Model	Bell Housing SAE N °	A	B	C	H1	H2	H3	L1	L2	Dry Weight kg(lb)
		Dimensions in mm								
W8400	#00 Free standing	625	1210	666	660	985	-35	1331	162	3200 (7055)



Output Coupling dimension										
A		B		C		D		Bolt Holes		
								No.	Diameter (E)	
mm	inch	mm	inch	mm	inch	mm	inch		mm	in
550	21,7	490	19,3	420	16,5	50	2	20	38	1,50

Masson Marine products are available all over the world through our network of dealers

Dealer:



www.masson-marine.com



contact@masson-marine.com

5 rue Henri Cavallier

89100 Saint Denis les Sens - France

