

Model		W 8450					
Power/RPM	kW/RPM (hp/RPM)	0,760 (1,019)	0,680 (0,912)	0,620 (0,831)	0,602 (0,807)	0,495 (0,664)	0,470 (0,630)
Maximum rated input	kW (hp)	1596 (2140)	1428 (1915)	1302 (1746)	1264 (1695)	1040 (1394)	987 (1324)
Ratio		8,173	8,707; 9,129	9,552; 10,015; 10,706; 11,068; 11,745	12,096	12,540	13,190; 13,858; 14,577
Maximum input RPM		2100					
Dry weight		kg(lb)					
SAE bell		Free standing					
Offset type		Vertical offset					
Kinematics		Reversible or Non-Reversible (Engine-Wise or Counter-Engine-Wise)					

Description

- Robust design and easy onboard maintenance.
- Robust design also withstands continuous duty in workboat applications.
- Fully works tested, reliable and simple to install.
- Reverse reduction marine transmission with hydraulically actuated multi-disc clutches.
- Case hardened and precisely ground gear teeth for long life and smooth running.
- Robust cast iron casing for direct or remote mounting.
- Emergency "get home" capability.
- Integrated Roller Thrust bearing.
- Design, manufacture and quality control standards comply with ISO.
- Suitable for twin installation with 100% rated power in ahead and astern condition.

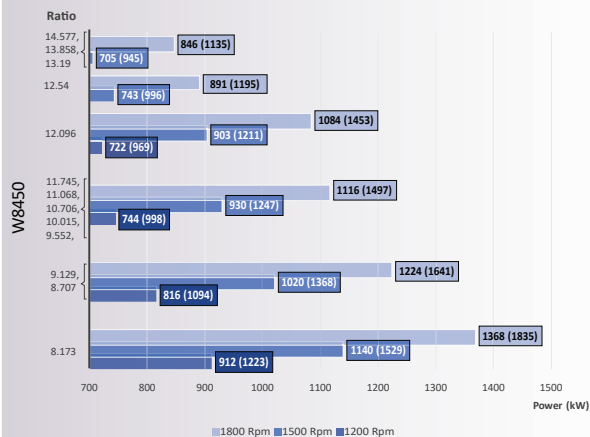
Standard Equipment

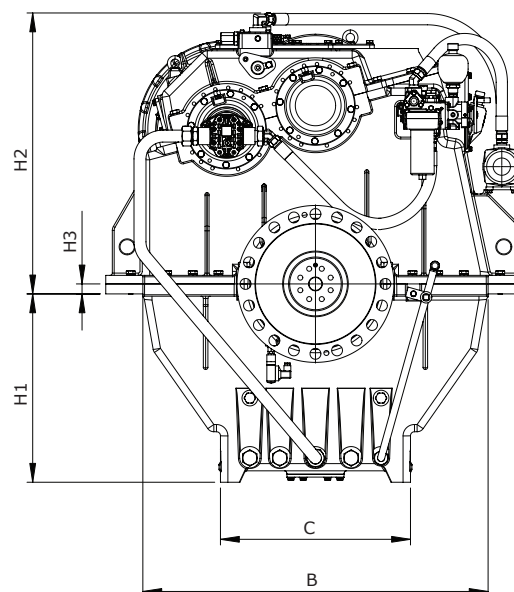
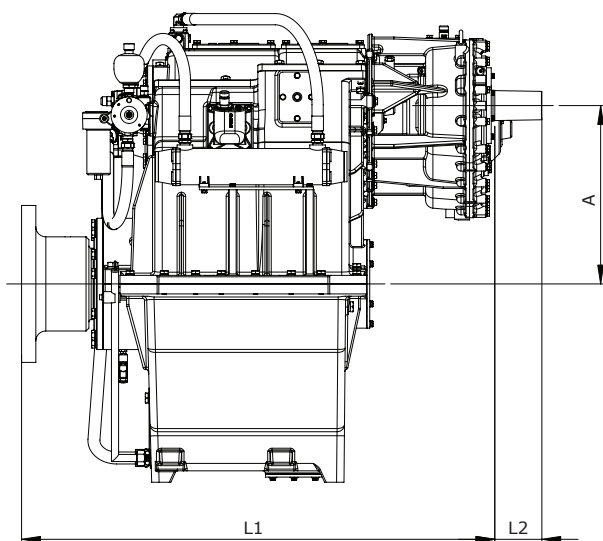
- Oil cooler complete with fittings and flexible hoses.
- Integrated Brackets.
- Free Standing only.
- Single oil filter.
- Manual clutch control.

Option

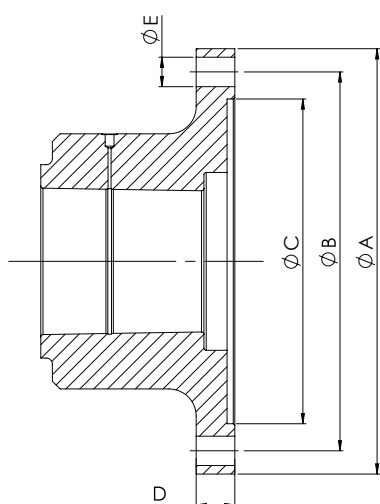
- Engine-matched torsional coupling.
- Propeller shaft flange and coupling bolt set.
- Classification by all major Classification Societies on request.
- PTO (live or clutchable).
- Electric trolling valve for slow-speed drive.
- Shaft brake.
- Electric clutch control.
- Trailing Pump.

Sample Powers kW (hp)





Model	Bell Housing SAE N °	A	B	C	H1	H2	H3	L1	L2	Dry Weight kg(lb)
		Dimensions in mm								
W8450	Free standing	625	1210	666	660	985	-35	1659	165	3885 (8565)



Output Coupling dimension

A		B		C		D		Bolt Holes		
								No.	Diameter (E)	
mm	inch	mm	inch	mm	inch	mm	inch		mm	in
550	21.7	490	19.3	420	16.5	50	2	20	38	1.50

Masson Marine products are available all over the world through our network of dealers

Dealer:



www.masson-marine.com



contact@masson-marine.com

5 rue Henri Cavallier

89100 Saint Denis les Sens - France

