

MM W3300

Vertical offset, direct or remote mount marine transmission.

Maximum rated input: 613kW (821hp)

Available for Medium and Continuous Duty applications.

Description

- Robust design also withstands continuous duty in workboat applications .
- Fully works tested, reliable and simple to install .
- Design, manufacture and quality control standards comply with ISO 9001 .
- Reverse reduction marine transmission with hydraulically actuated multi-disc clutches .
- Easy onboard maintenance .
- Compatible with all types of engines and propulsion systems .

Features

- Case hardened and precisely ground gear teeth for long life and smooth running .
- Output shaft thrust bearing designed to take maximum propeller thrust astern and ahead .
- Smooth and reliable hydraulic shifting with control lever for attachment of push-pull cable or other operating system .
- Suitable for twin engine installations (same ratio and torque capacity in ahead or astern mode) .
- Emergency "get home" capability .
- Robust cast iron casing .
- Free standing .
- Oil cooler complete with fittings and flexible hoses .
- Integrated brackets .

Options

- Engine-matched torsional coupling .
- Propeller shaft flange and coupling bolt sets .
- Classification by all major Classification Societies on request .
- Mounting brackets .
- SAE 1 or SAE 0 bell housings .
- PTO (live or clutchable) .
- Trolling valve for slow-speed drive .
- Adapter flange for SAE 0 and SAE 1 connections .
- Electric clutch control (24 VDC) .
- Trailing pump .

MM W3300

Ratings

Medium Duty

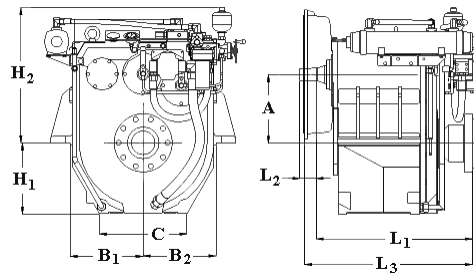
RATIOS	MAX. TORQUE		POWER/RPM		SAMPLE POWER CAPACITIES						MAX. RPM
	Nm	ftlb	kW	hp	kW	hp	kW	hp	kW	hp	
					1800 rpm		1900 rpm		2100 rpm		
6.556, 6.940	2789	2057	0.2920	0.3916	526	705	555	744	613	822	2200

Continuous Duty

RATIOS	MAX. TORQUE		POWER/RPM		SAMPLE POWER CAPACITIES						MAX. RPM
	Nm	ftlb	kW	hp	kW	hp	kW	hp	kW	hp	
					1200 rpm		1600 rpm		1800 rpm		
6.556	2694	1987	0.2821	0.3783	339	454	451	605	508	681	2200
6.940	2436	1797	0.2551	0.3421	306	410	408	547	459	616	2200

MM W3300

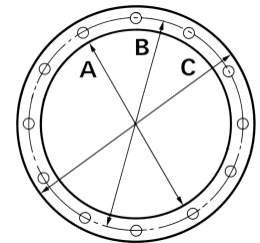
Dimensions



mm (inches)									
A	B ₁	B ₂	C	H ₁	H ₂	L ₁	L ₂	L ₃	Bell Hsg.
379 (14.9)	402 (15.8)	402 (15.8)	484 (19.1)	390 (15.4)	746 (29.4)	839 (33.0)	90.0 (3.54)	908 (35.8)	1
Weight kg (lb)					Oil Capacity Litre (US qt)				
1330 (2930)					63.0 (66.8)				

SAE Bell Housing Dimensions

SAE No.	A		B		C		Bolt Holes		
	mm	in	mm	in	mm	in	No.	Diameter	
								mm	in
0	647.7	25.5	679.45	26.75	711.2	28.0	16	13.49	17/32
1	511.18	20.125	530.23	20.875	552.45	21.75	12	11.91	15/32



Output Coupling Dimensions

A		B		C		D		Bolt Holes		
mm	in	mm	in	mm	in	mm	in	No.	Diameter (E)	
									mm	in
320	12.6	270	10.6	175	6.89	43.0	1.69	10	27.5	1.08

